

The President's Collection

Commissioned Arts Giving Catalogue



Welcome



What makes St. Joseph Mercy Oakland a world-class hospital is our commitment to patient safety at the highest levels, quality of care and value. Our numerous awards validate the excellence of care and exceptional outcomes experienced by our patients. Our dedica-

tion to technology allows us to utilize the latest medical innovations to provide the safest, high quality care. But our mission to improve the health of the community goes further. We also created a healing environment especially focused on body, mind and spirit.

Examples of this healing environment can be seen throughout our organization. Artwork depicting natural scenes, waterfalls in public areas and family lounges, comfortable seating and softer colors evoke a soothing atmosphere. Research shows that artwork plays a direct role in enhancing the patient experience. It can help improve

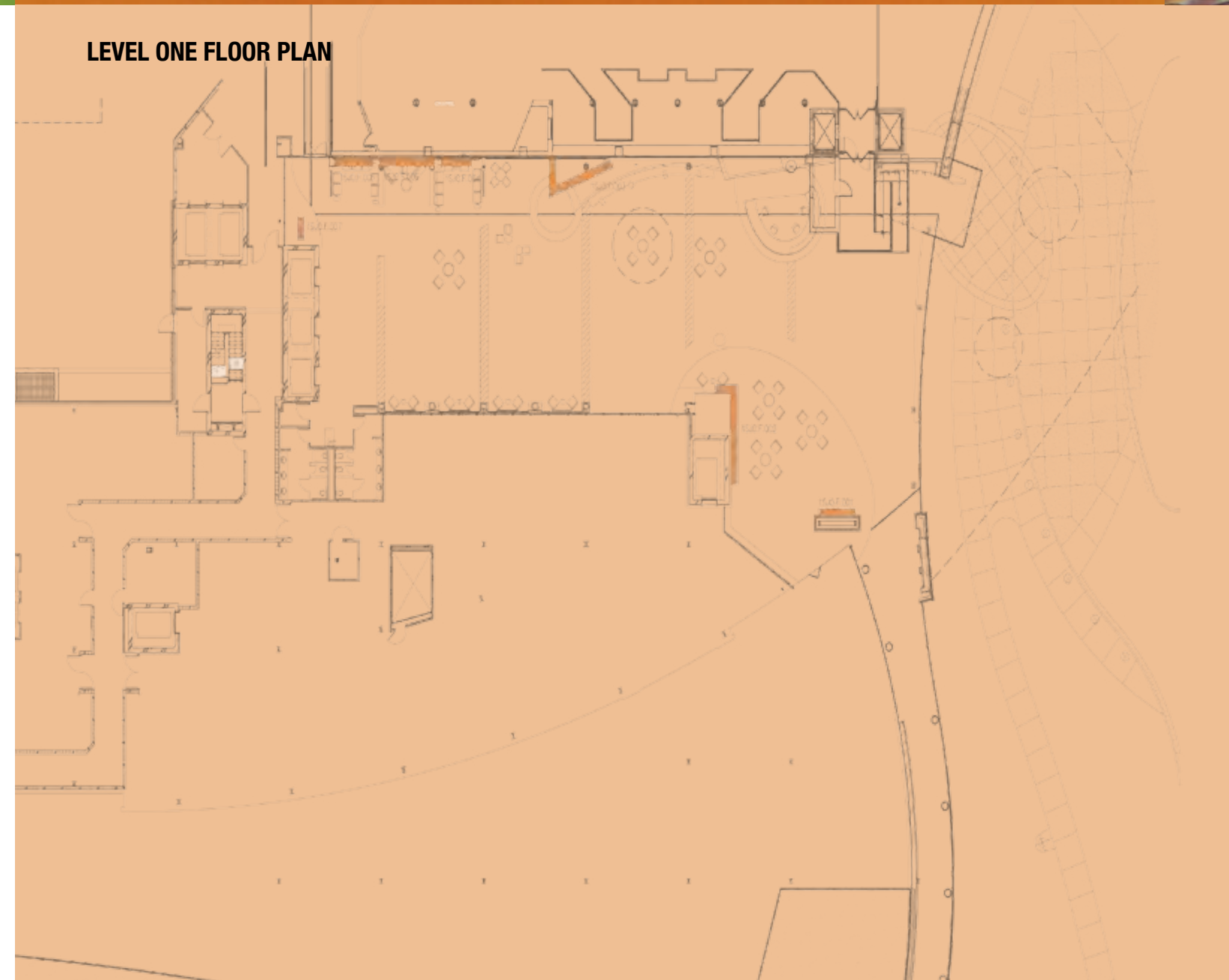
health outcomes and reduce patient anxiety and stress, pain perception, the need for painkillers, depression associated with invasive treatments and length of hospital stay.

We will expand this healing environment into our new South Patient Tower, scheduled to open in April 2014, with new artwork that nurtures patients and their families. A call for artists has acquainted us with numerous Michigan artists who we have selected to create exceptional artworks in a variety of media to enhance our hospital and the patient experience.

We invite you to become a sponsor in our healing arts initiative. Your participation can help our patients on their journey toward complete healing.

Jack Weiner,
President and CEO

LEVEL ONE FLOOR PLAN



Architectural rendering of lobby



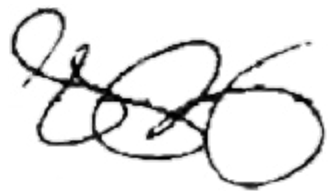
1 First Floor: Main Entrance/Lobby

Earth, Air, Fire, Water

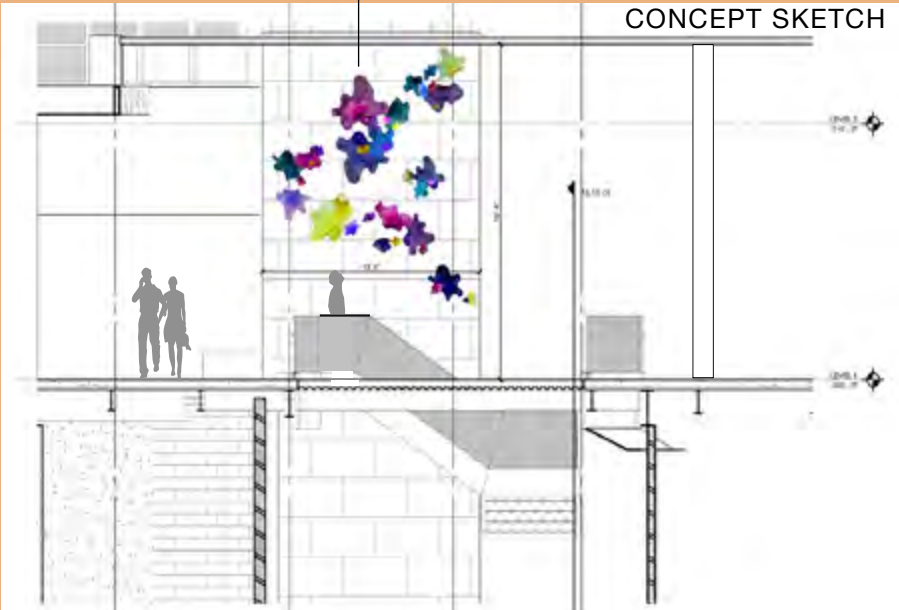
"Those who contemplate the beauty of the earth find reserves of strength that will endure as long as life lasts. There is something infinitely healing in the repeated refrains of nature..." Rachel Carson

April Wagner was born in Muskegon, Michigan, on the shores of Lake Michigan. A natural artist, her interest in form, color, and line were apparent since early childhood. Blessed with understanding parents, April was encouraged to focus her education on the arts; exploring music, dance, and many types of visual arts. She initially developed a passion for blowing glass, specifically molten glass. April has been a glass artist for over twenty years. She draws inspiration from her other passion, landscaping and gardening. April has a Bachelor of Fine Arts from the College for Creative Studies in Detroit, MI.

“In addition to my love affair with glass, I am cognizant of three salient components of being born a maker of objects. They are: the ‘craft of making’, the ‘experience of making’, and the ‘end result’. Each aspect of the creative process offers me very different and satisfying experiences, each as necessary as the others. Each piece I create is a part of me brought to life and given to the viewer.”

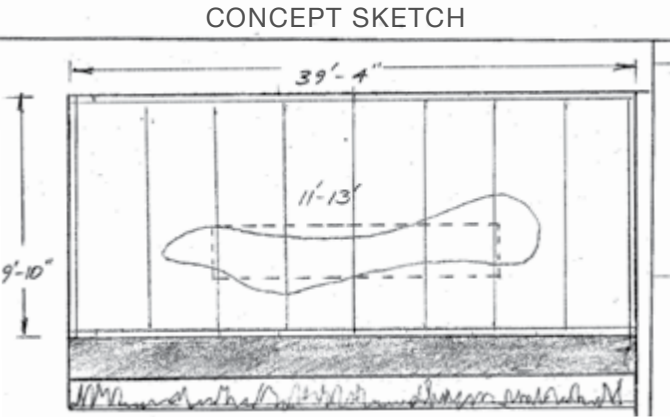
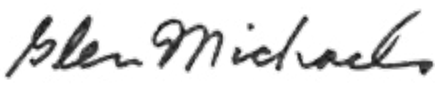


Main Lobby Waiting Area
Blown Glass Sculpture

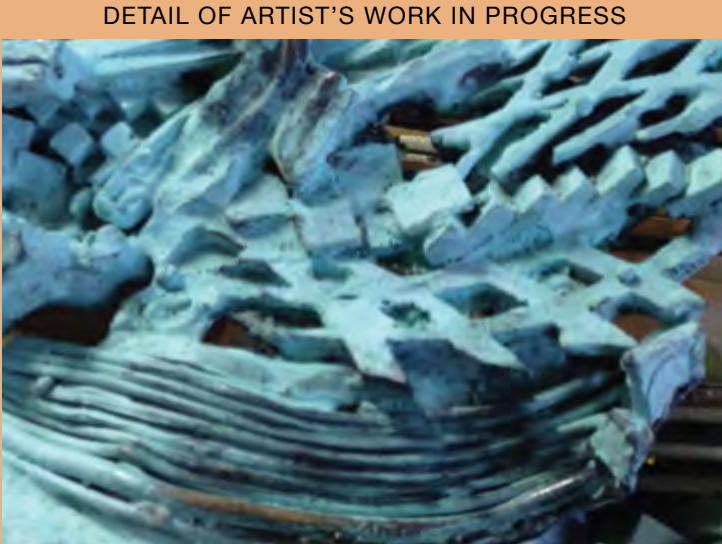


Glen Michaels’ childhood memories of the state of Washington’s varied terrain have always been a source of inspiration and account for his fascination with contrasting surface qualities and the juxtaposition of pattern against pattern. Traveling through the rugged mountain passes annually with his family to the coast, he saw rock formations exposed after the winter’s ice damage which created multiple layers of striations and mineral deposits that created stunning patterns. This geological phenomenon has stayed with him his entire life, as well as the state’s wind patterns that create an elegant movement over fields in the Polouse countryside.

Glen received an MFA from Cranbrook Academy of Art where he taught for many years. His recent work can be seen at the Wayne State University School of Medicine, Detroit Medical Center, and Henry Ford Hospital, Detroit.



Fireplace Feature
13' W x 3' H
Architectural Sculptural Assemblage



Lead artist **Jacqui Ridley** always drew, took art classes when she was an undergrad at Wayne State University, ran a successful bakery business, and found ways to nurture her creative spirit. In 2004 she sold her business and began Jacqui Ridley Mosaics. Morrine Maltzman, a University Of Michigan graduate with a Master in Music degree, was a major collaborator on the St. Joe Mosaic.

Jacqui Ridley Morrine Maltzman



CONCEPT SKETCH

DETAIL OF ARTIST'S WORK IN PROGRESS



Fountain Feature
6'H x 17'W
Custom Glass Mosaic

"The design of the mosaic begins with the golden circle representing the sun and all its healing powers. Its warm golden hues illuminate in flowing waves of color representing hope, strength, courage, power, tranquility and optimism."



CONCEPT SKETCH

Angelis Jackowski is an award-winning watercolorist who was born in the Andes of Venezuela and moved to Michigan in 1981. She has been working extensively in watercolors as a professional artist for nearly two decades and has won several prestigious awards around the country, including Best of Show titles in the states of Michigan, Colorado, New Mexico and Texas. She has also exhibited her work in Toronto, Ontario and Beijing, China. She is represented in Michigan by galleries in Ann Arbor, Glen Arbor and Elk Rapids.

Angelis



CONCEPT SKETCH

Main Lobby Waiting Area
Artwork size: 40"H x 66"W
Original Watercolor



CONCEPT SKETCH

Main Lobby Waiting Area
Artwork size: 6"H x 40"W
Original Watercolor



CONCEPT SKETCH

Main Lobby Waiting Area
Artwork size: 12"H x 40"W
Original Watercolor

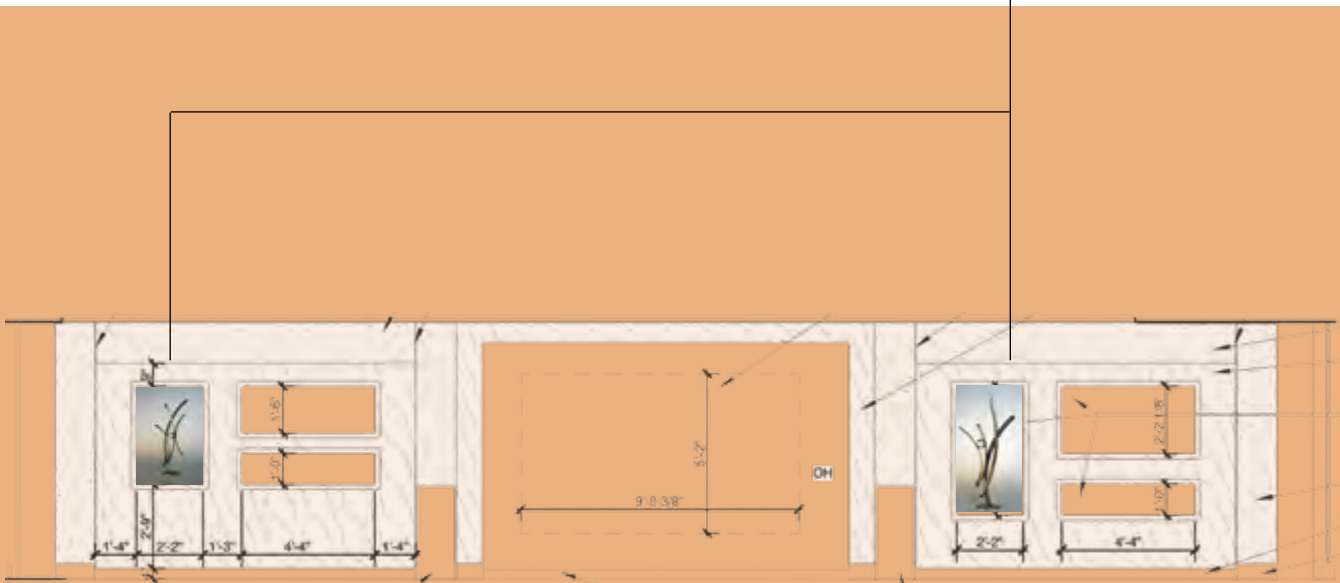
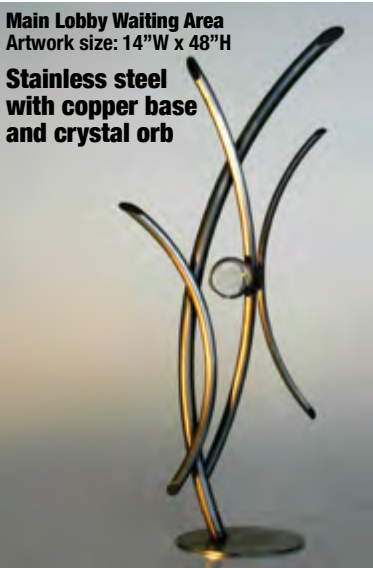
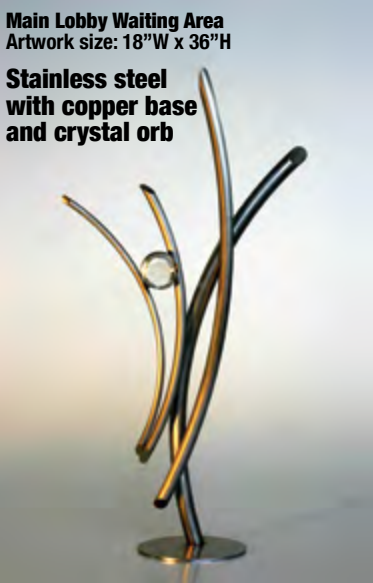


Main Lobby Waiting Area Art Pieces

As brothers and partners, Erik and Israel Nordin have the ability to be honest with their opinions. This is a blessing and a curse. Sometimes they are almost psychic, seeing the same resolution simultaneously. Other times they can deliberate for hours to reach decisions. They have one rule...the design is what matters. When they both agree, they know they have resolved things properly. They have distinct characteristics that make their styles individualistic; together as a team they form a greater entity. When their styles do meld, they create the most beautiful pieces of all. They have learned to create art together, which is not the easiest thing to do. Their influences

are heavily in their surroundings, which are central to the city that they live and work. Art is what they live and breathe, and together they can help make both of their visions reality. *“Being able to trust your partner with every thought, secret, doubt and hope is the most precious thing one can have in a relationship.”* They are both driven to make a difference with their art and support each other’s dreams and visions. They love to explore and welcome challenge and have complementary talents. Their desire to create epic pieces drives them to do things they have never done and to work hard every day. *“ART=LIFE is our mantra!”*

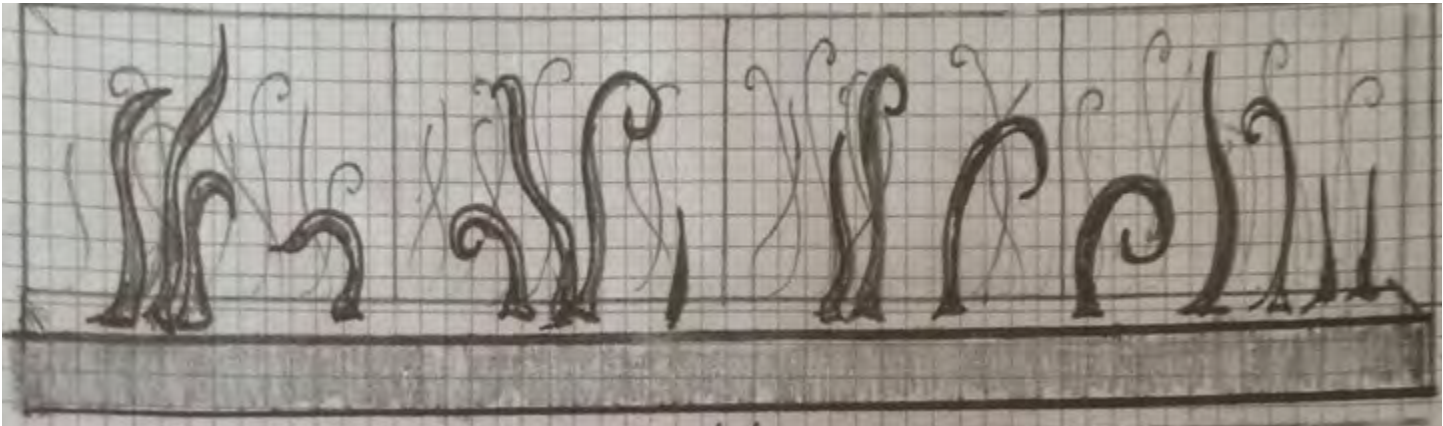
Israel Nordin



Main Lobby Waiting Area Art Pieces

History, tradition, and technique are the main influence of every piece of work that Chris Nordin does. These three sources are highly integrated together with Italian glass culture. Not limiting himself to traditional materials, his work continually draws him towards alternative mixed media. Knowing that the sculptural side of his work is the true challenge to his creative processes, this opens the door to the ever challenging sport of technical blowing, allowing him to sharpen his skills to a level that satisfies his technical needs. Technical glassblowing is an endless road, which is why he loves using glass as a medium, either as sculpture or sport.

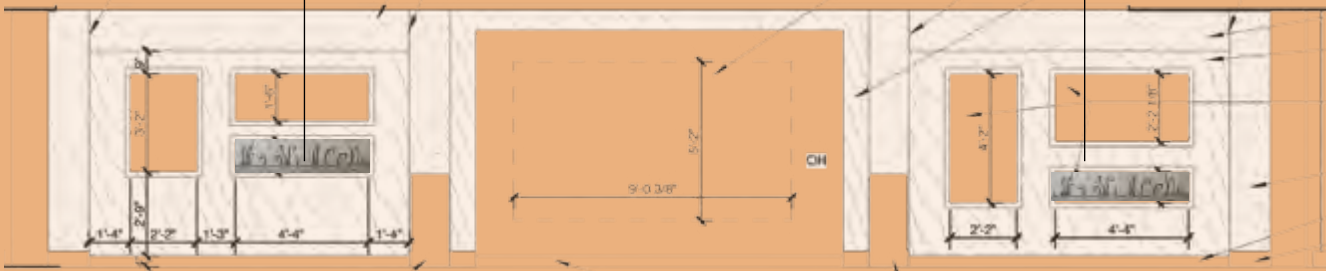
Chris Nordin & Michelle Plucinsky



Main Lobby Waiting Area
12”H x 52”W
Blown Glass Reeds



ARTIST'S
PREVIOUS
WORK



Main Lobby Waiting Area Art Pieces

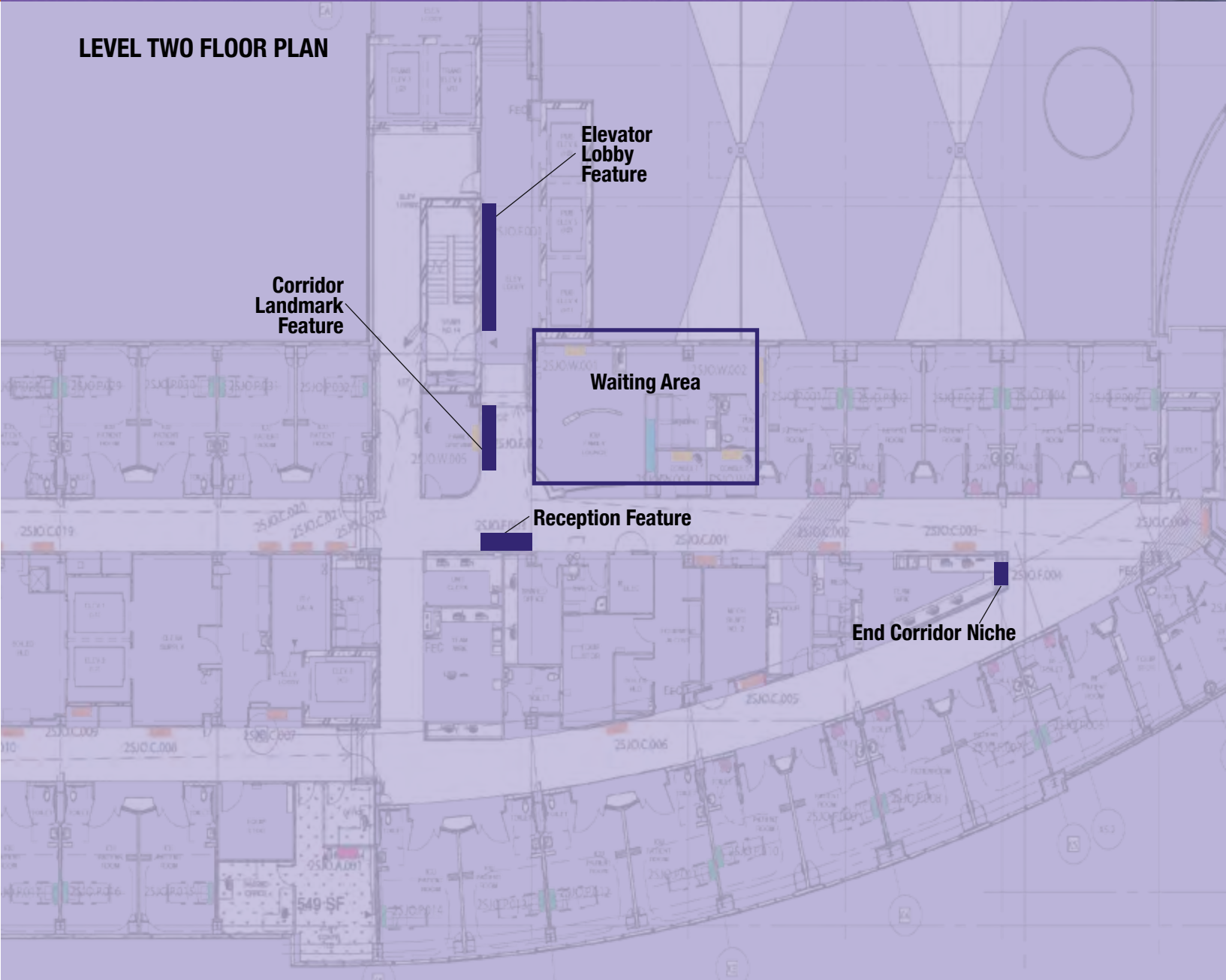
With a career spanning over forty years, Janice Trimpe has been a sculptor, teacher, mentor, designer, and a business owner. Her works include a broad range of styles, from traditional figurative to ultra contemporary, and includes bas reliefs, animals, and even a line of dolls. She is perhaps most noted for her public monumental works and portrait statues of business leaders and politicians.

Janice B Trimpe

"Cherish depicts a mother's tender embrace of her child, just as a hospital staff cares for its patients."



Landmark Lobby Feature
Artwork size: 36”H x 20”W
Cast Bronze



2 Second Floor: Intensive Care Unit Belief

Visual imagery of strong elements: trees, rocks, waterfalls and mountains

"Art must do something more than give pleasure, it should relate to our own life so as to increase our energy of spirits."
Kenneth Clark

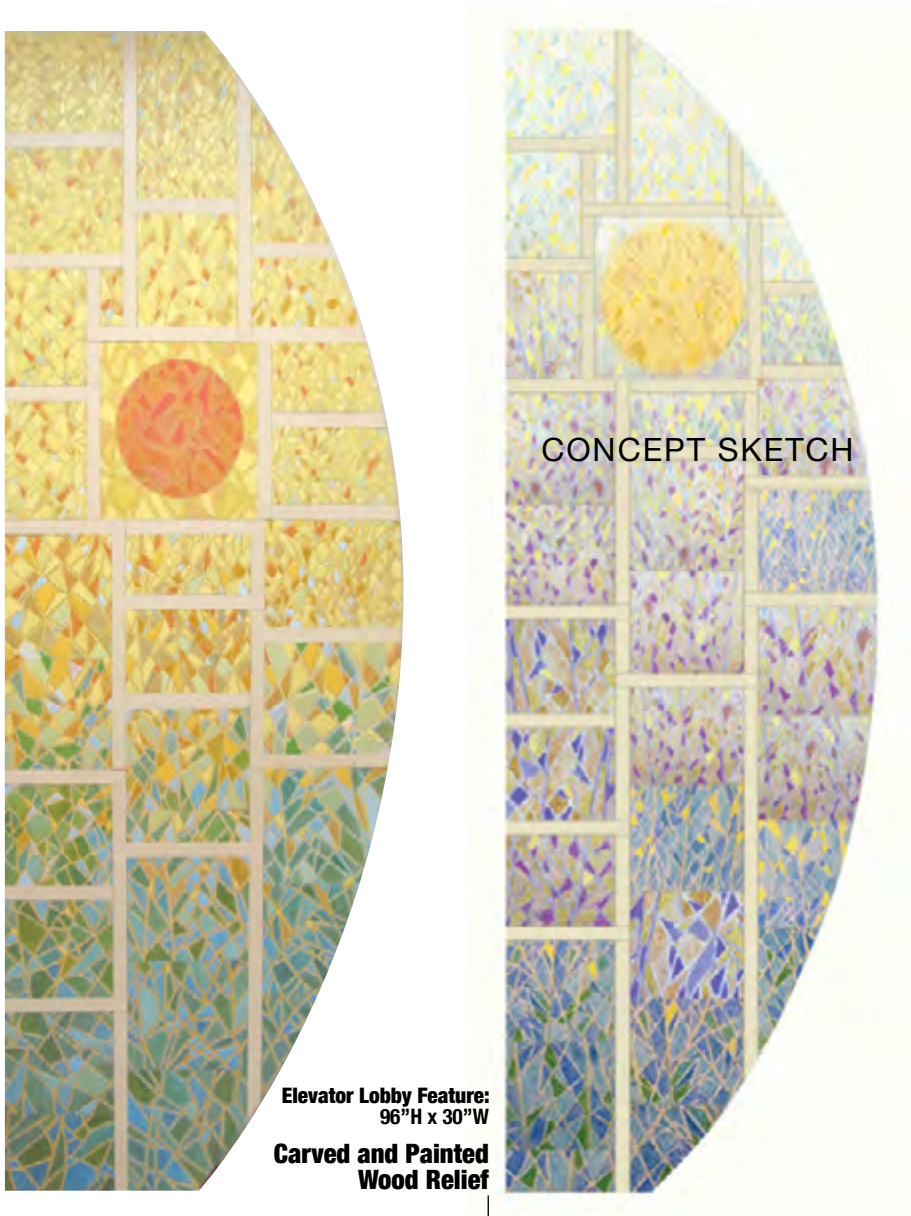
Sandy Rice makes relief sculptures in carved wood and paint. Her award-winning work has been shown in solo, invitational, and juried exhibitions including international competitions in Los Angeles and New York. She holds a Master of Fine Arts degree from Wayne State University in Detroit and a Bachelor of Fine Arts degree from Eastern Michigan University. She currently lives in Troy, Michigan.

Sandra Rice

"In keeping with the theme of peace and healing, the artwork I have designed for this project represents an abstract landscape, evoking growth and abundance, an affirmation of life and a meditation on the sun's nurturing light."

Reception Feature:
87"H x 29"W
Carved and Painted Wood Relief

Elevator Lobby Feature:
96"H x 30"W
Carved and Painted Wood Relief



DETAIL OF WORK IN PROGRESS



Reception Feature



Elevator Lobby Feature

Living in Michigan's Upper Peninsula, immersed in the woods, **Bruce Murray** finds himself fulfilling a desire to make unique images of the tree with the vision of expressing them as a metaphor for our own presence in this world. "Through the 'new found' media of digital camera and large format printer, a wave of Full Tree portraits and Wood-

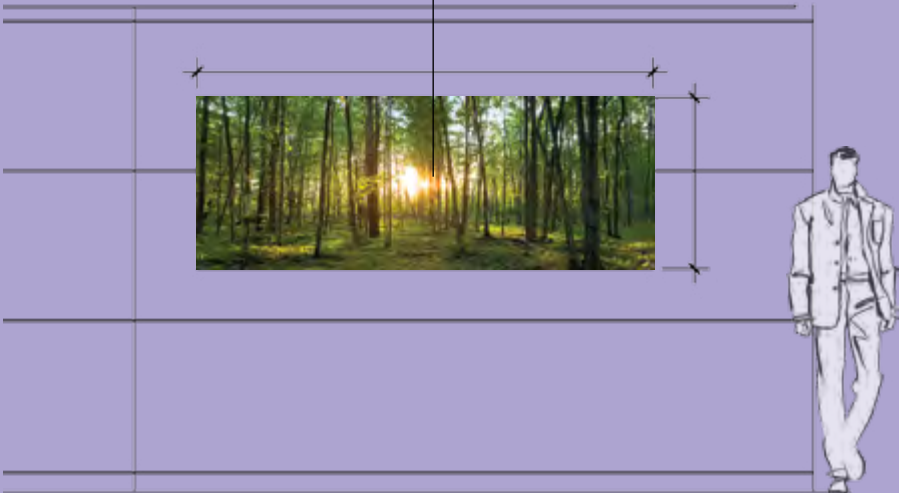
land scenes have been unleashed. As a metaphor, 'Lifefire' is a perfect example, displaying the community of trees dwelling in balance and looking to their source of life in the light while gaining stability and sustenance from that in which they are grounded."

Bruce Murray



Main Corridor Landmark Art
30"H x 77"W

Panoramic Photo Printed on Canvas with Stretcher Frame



Lucille Procter Nawara received a BA degree in painting and printmaking from Smith College, a BFA at Boston University, and MFA from the University of Illinois. She taught drawing and painting for 20 years at Wayne State University, Cranbrook Academy of Art, Center for Creative Studies and other Michigan colleges. Nawara’s work has been exhibited at American museums including the

Detroit Institute of Arts, San Francisco Museum of Art, Otis Art Institute of Los Angeles, Butler Institute of American Art, and the Miami Art Center. She has received creative artist grants from the Michigan Council for the Arts.

Lucille P. Nawara



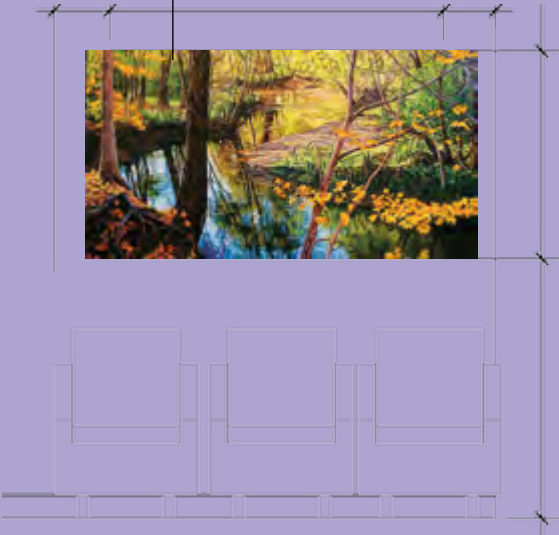
Waiting Area Art
“Rouge River”
31”H x 60”W
Oil on Linen

"For Rouge River, I took photos and made a pencil sketch of bends in the Rouge River in the adjacent property to ours in Beverly Hills, MI on a warm and brilliant October day. It flows by the Ford River Rouge Industrial Complex and into the Detroit River."

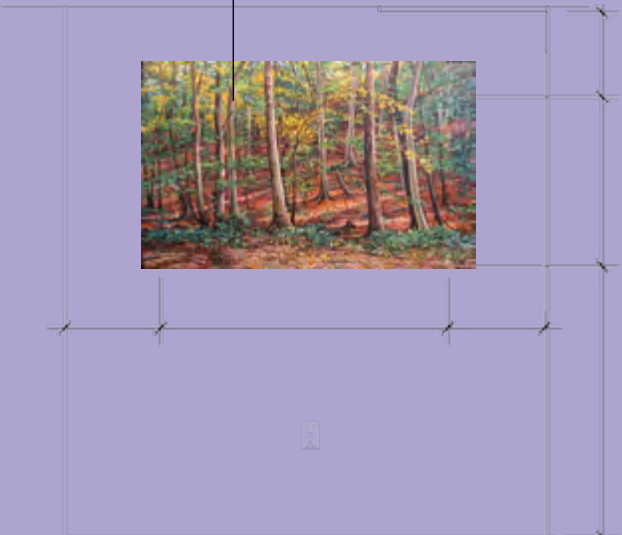


Waiting Area Art
“Greenan Beeches”
31”H x 37”W
Oil on Linen

"On an Artist-in-the-Parks Residency/ Grant from the National Park Service in Sleeping Bear Dunes National Lakeshore in Empire, Michigan, I bundled up warmly and painted four days on location on an isolated dirt road , then finished Greenan Beeches in a local farmhouse, and at our home studio. I was captivated by the slivers of light permeating the forest."



Waiting Area Features



Ryan Weiss was born in 1985 and grew up scribbling crayons in Belleville, Michigan. He studied illustration at Kendall College of Art and Design in Grand Rapids, Michigan. His work has been featured in galleries across Michigan and beyond, since 2005.

"For me, inspiration comes through the marvel of the intricate web of intercon-

nections that form the base of endless possibilities.

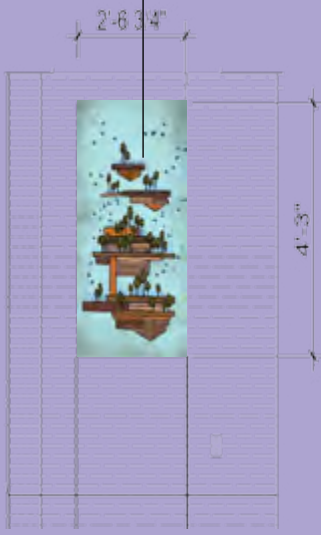
"I intend to create a piece for St. Joe’s that will evoke the healing power of nature and community by creating an imaginative 3-D landscape of found and invented objects featuring apple trees, blue birds and other wildlife thriving harmoniously."

Ryan Weiss

ARTIST’S PREVIOUS WORK



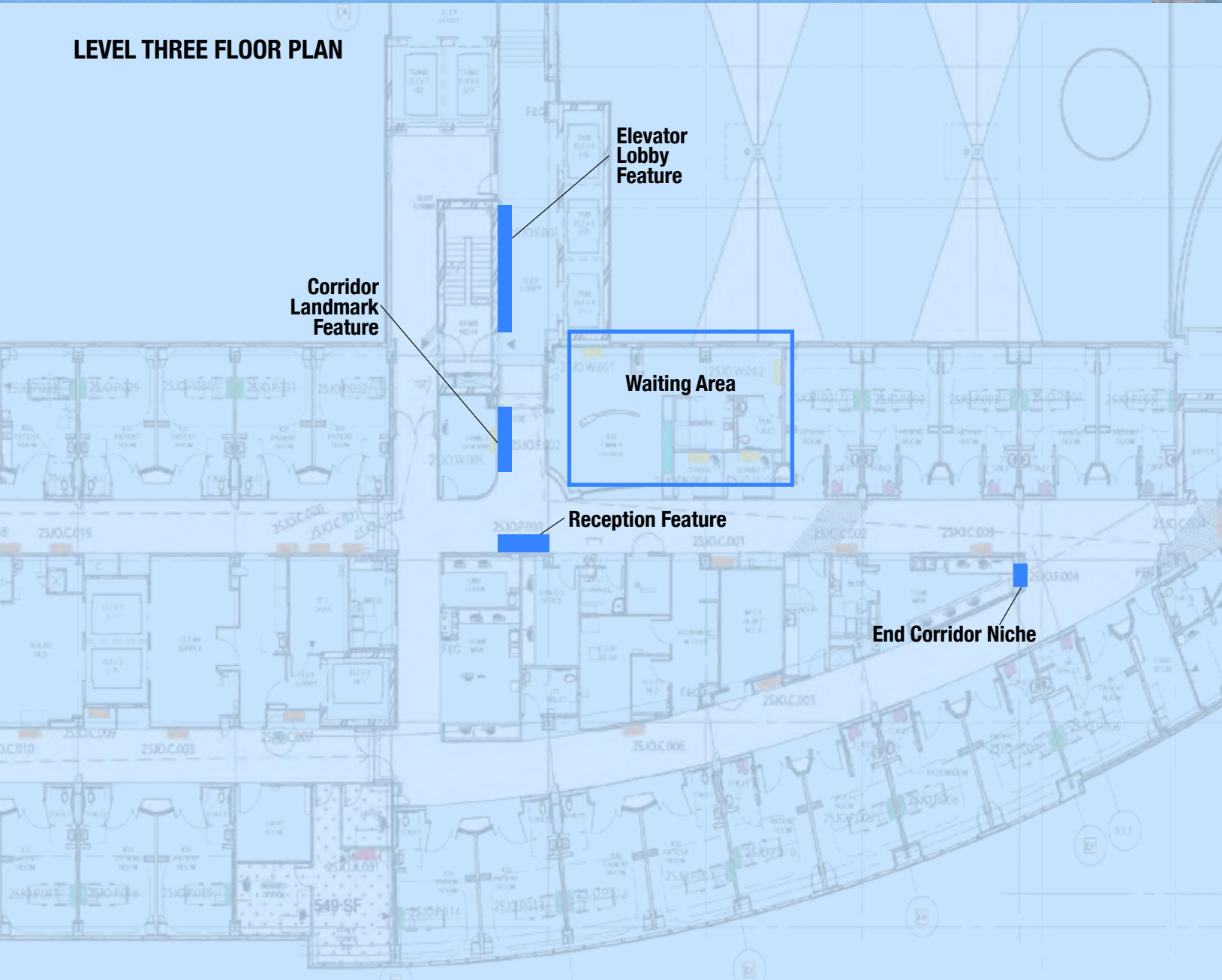
Corridor Niche
4’-3”H x 2’-6”W
Assemblage



PERSPECTIVE

Corridor Niche

LEVEL THREE FLOOR PLAN



Nawal Motawi has been making art tiles for a quarter of a century. She's the founder and artistic director of the Ann Arbor-based Motawi Tileworks, where her small team of craftspeople designs and creates in the Arts & Crafts tradition. Motawi looks to nature and period architecture for an endless font of design ideas, and her glazes are known for their distinctive richness. When she's not planning the next great tile design, she can be found consulting on Motawi Tileworks' signature fireplace and kitchen installation projects.

Nawal Motawi

"The two coral reef murals installed in St. Joe's New Patient Tower were created specifically for the hospital. Each of the tiles in the mural has been painstakingly hand-drawn and glazed, resulting in a vivid underwater scene that teems with aquatic life."

Reception Feature:
87"H x 29"W
Custom 3D Ceramic Tile

Elevator Lobby Feature:
96"H x 30"W
Custom 3D Ceramic Tile



3 Hope

Third Floor: Critical Care Unit

Visual imagery of balance in nature, as well as harmony in shapes and color

"Art is our memory of love. The most an artist can do is say, "Let me show you what I have seen, what I have loved, and perhaps you will see it and love it, too."
Annie Bevan

DETAIL OF WORK IN PROGRESS



Reception Desk Feature

Elevator Lobby Feature

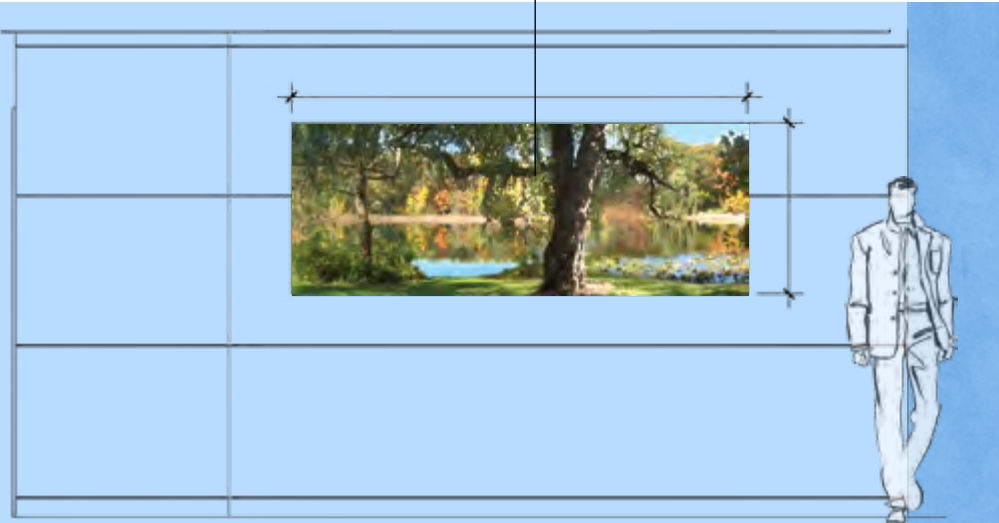
Katherine Larson is a painter, graphic designer, children’s book illustrator and classical singer. She is often asked to speak at universities and for regional art groups. Her murals and commissioned paintings can be found around the globe from vineyards in Florence, Italy, to Great Harvest Bread Stores across the U.S., to many restaurants, retail stores, and private homes. She has ten nationally distributed children’s books. For the past 28 years, she has also run a graphic design firm called "Diva Designs" out of Ann Arbor, Michigan. In 2008, she was awarded two artist in residen-

cies and discovered a love for plein air painting. Primarily self-taught in all disciplines, Ms. Larson began her studies in Fine Art at Ball State University. She has also studied at the British Institute in Florence, Italy and the Goethe Institute in Rothenburg, Germany. Her month-long, one-woman show entitled: "Light through the Eyes of Nature" has traveled from the Farmington Hills City Hall Gallery to the HVCA Gallery in Milford, Michigan. Most recently, she won the People’s Choice award at the Glen Arbor Paint Out Competition.



Main Corridor Landmark Art:
36”H x 90”W
Oil Painting on Aluminum Panel

ARTIST’S PREVIOUS WORK



Main Corridor Landmark Art

Howard Nordlund has been painting fine art for over forty years, and has had many exclusive one-artist exhibits throughout the country. His art has been displayed in famous collections throughout the world and often honored with excellent reviews. When he began using God’s art–the earth’s minerals–to further enhance his own art, he discovered a fabulous phenomenon. “Minerals are tremendously exciting! Their incredible beauty is expressed in innumerable colors, shapes and varieties. They sparkle like diamonds! They are truly alive!” As he selects a mineral, holds it in his hand and views it from numerous angles, he studies and ponders its individual characteristics and beauty. As he paints, he continuously contemplates the outcome of the final product. Art is born deep within his soul and floods the canvas with a magnificent spectrum of color and intensity; it embraces and encompasses his being.

Howard R. Nordlund



Waiting Room Feature
"Autumn Walk"
30”H x 30”W

Embellished Giclee

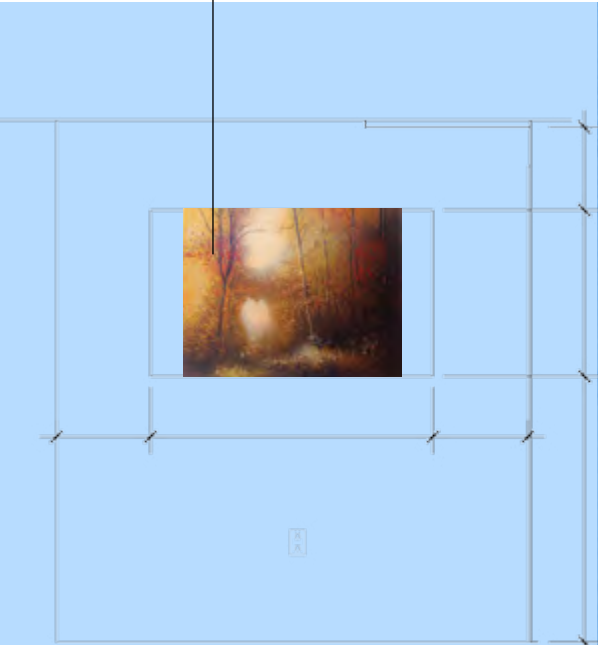


Waiting Room Feature
"Scarlet September"
24”H x 30”W

Embellished Giclee



Waiting Area Feature

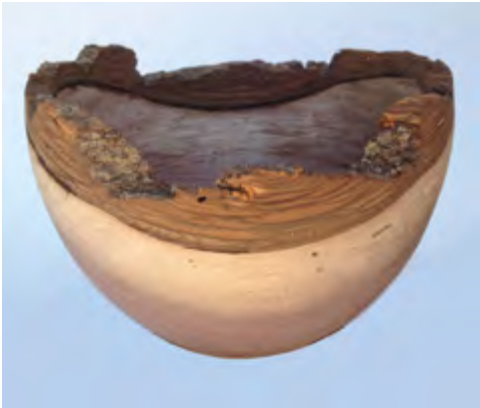


Ryan Woodward–Royal Oak, MI

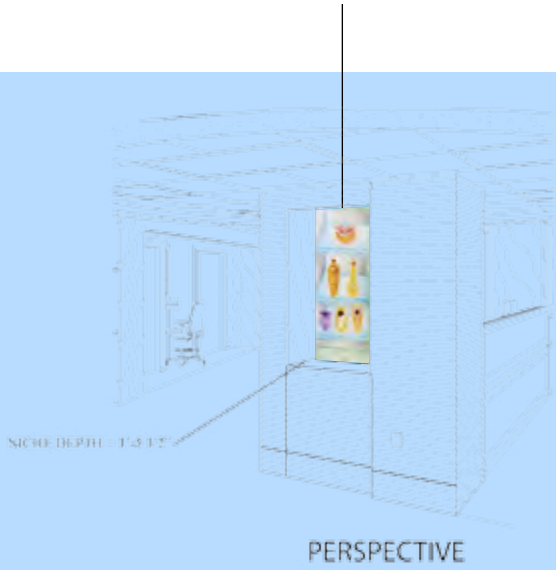
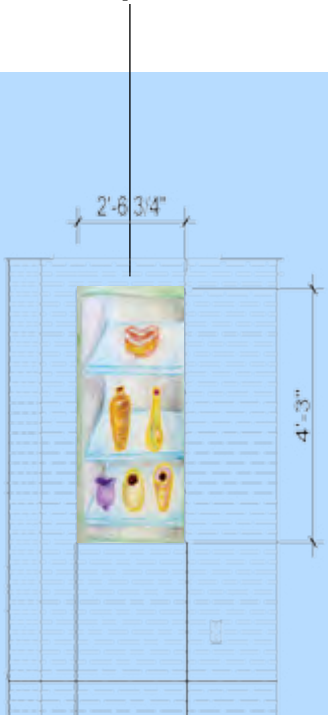
Ryan Woodward began woodworking at a young age, and believes it is part of his DNA. It is his passion to show the beauty of the material he works with. In his pieces he uses organic patterns of decay and twisted grain from deformed parts of a tree to break up the symmetrical nature of the woodturning process. He takes joy in using a material that is renewable, often recovering logs from storm damaged trees destined to the burn pile. “Woodward” means keeper of the forest, an ideal he upholds in these works.

R. Woodward

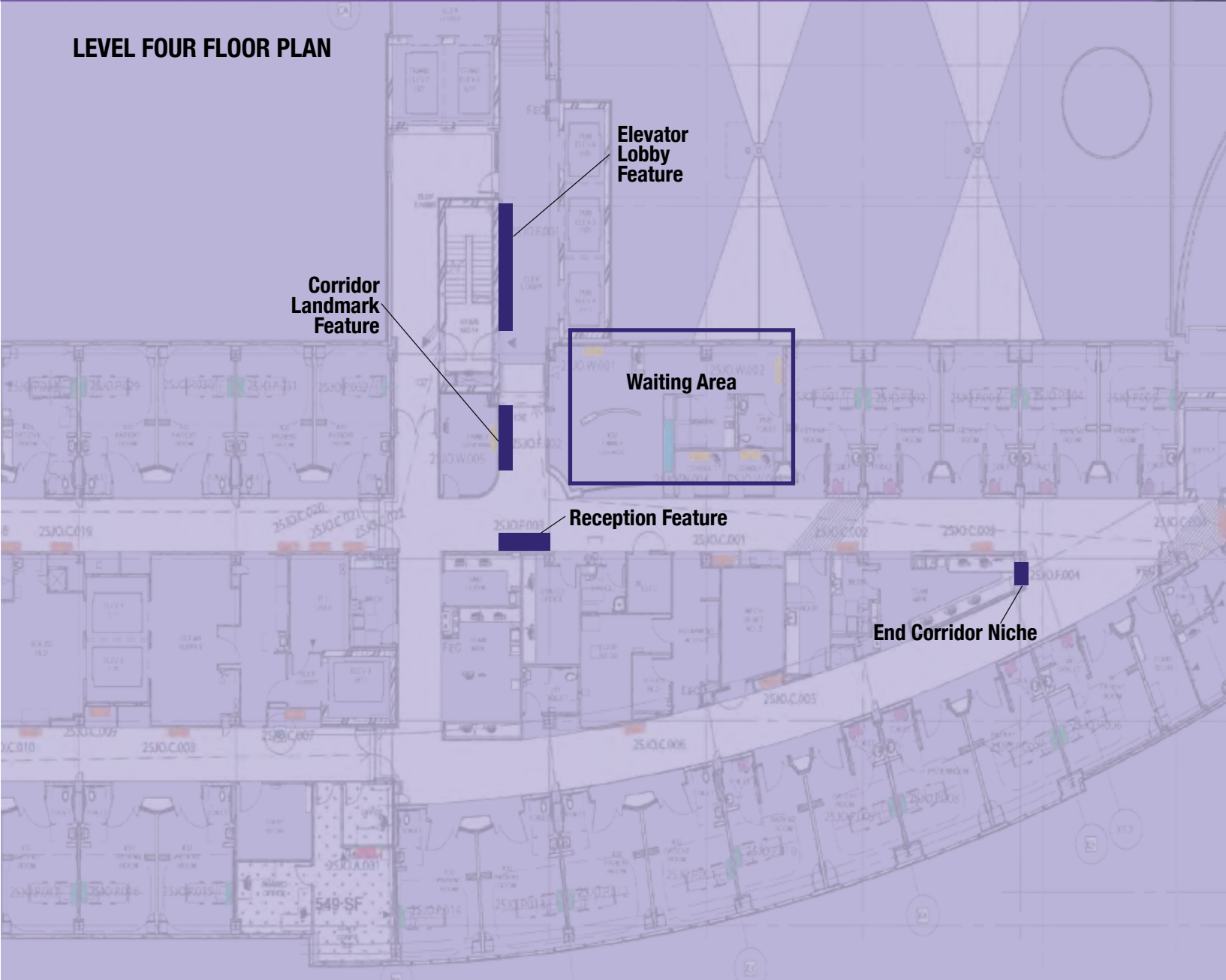
ARTIST’S
PREVIOUS
WORK



Corridor Niche
Various Dimensions
6 Wood Sculptures on Glass Shelves



Corridor Niche



4 Fourth Floor: Medical Surgical Unit

Inspire

Imagery evoking big sky and open landscapes

"It is not sufficient to see and to know the beauty of a work. We must feel and be affected by it." Voltaire

Ramona Martin has been a graphic designer in the metro Detroit area for more than twenty years. She is a freelance artist and owner of Michigan Artisans, a gallery/boutique that represents artists from Michigan in Detroit’s historic Eastern Market District. While she has dabbled in many media, she found working with glass making mosaics and fused glass art to be a passion. Her feature piece is a representation of the beauty of Michigan in the spring and fall.



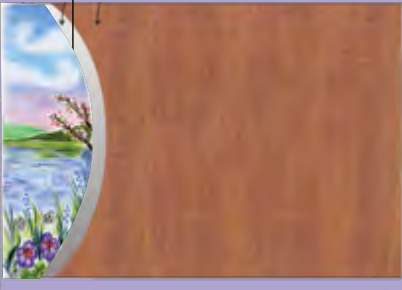
Reception Feature:
87”H x 29”W
Mosaic Tile



Elevator Lobby Feature:
96”H x 30”W
Mosaic Tile

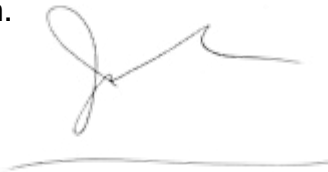


Reception Feature



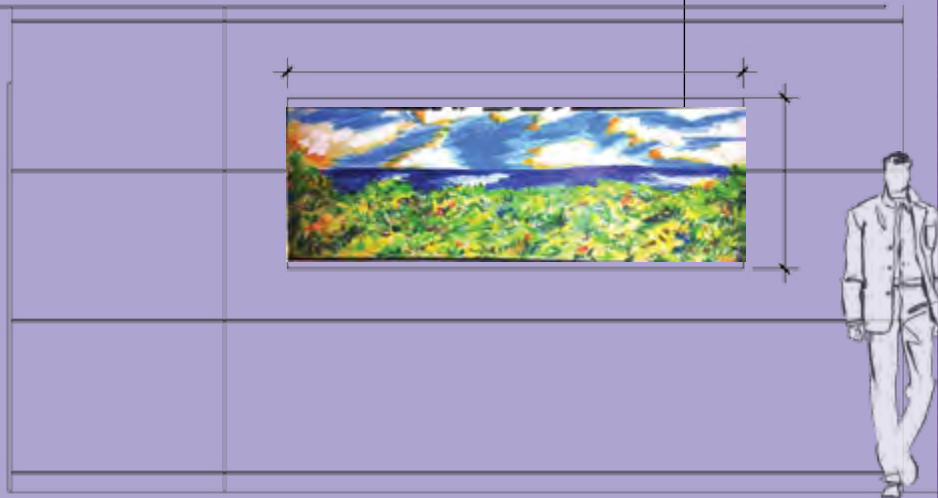
Elevator Lobby Feature

Jon Parlangeli’s current work is rooted in abstract expressionism, impressionism and action painting. Through involved process and experimentation, the work becomes an amalgamation of color, depth and movement within nature. The process itself represents everything to his work and personally outweighs the final product in terms of importance because of the informational and emotional release of creation.



"This painting for St. Joseph Mercy Oakland is of one of the few places in the world where I go to find peace, and I wanted to convey that feeling of inner beauty and harmony outwardly towards hospital patients and visitors."

Main Corridor Landmark Art:
36”H x 90”W
Textured Acrylic
on Board



Main Corridor Landmark Art

Brian Smith is a talented landscape artist who began drawing and painting at an early age. Largely self taught, Brian has become a recognized plein air and studio painter who’s works are included in many private and corporate collections in the U.S. and Germany. Working in oils, he paints frequently on location, striving to complete works in a single session, as well as using plein air studies as models for larger studio works. *“Being an outdoors person, art follows what I ordinarily do. I hope my landscapes evoke the sense of a moment in time and encourage the viewer to contemplate and consider the usual, beyond a passing glance.”*



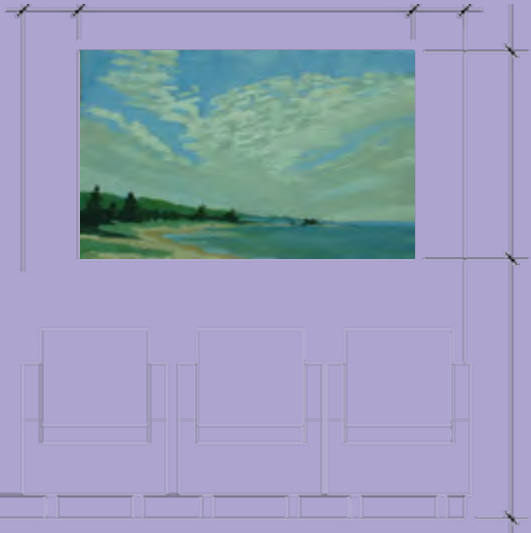
Waiting Room Art:
30”H x 40”W
Original Oil on Canvas

Brian Smith

"The works for St. Joe's fourth floor were designed with the inspirational aspect of broad sky views and large spaces in mind. It can be uplifting to watch a sunset/sunrise in a cloud-studded sky and looking into distant space can invoke a sense of anticipation for what is ahead, or what we are moving toward. The works are based on Northern Michigan images, where I often go and incorporate the calming and introspective aspects I've encountered seeing the sky and landscape reflected in Great Lakes waters."



Waiting Room Art:
30”H x 40”W
Original Oil on Canvas



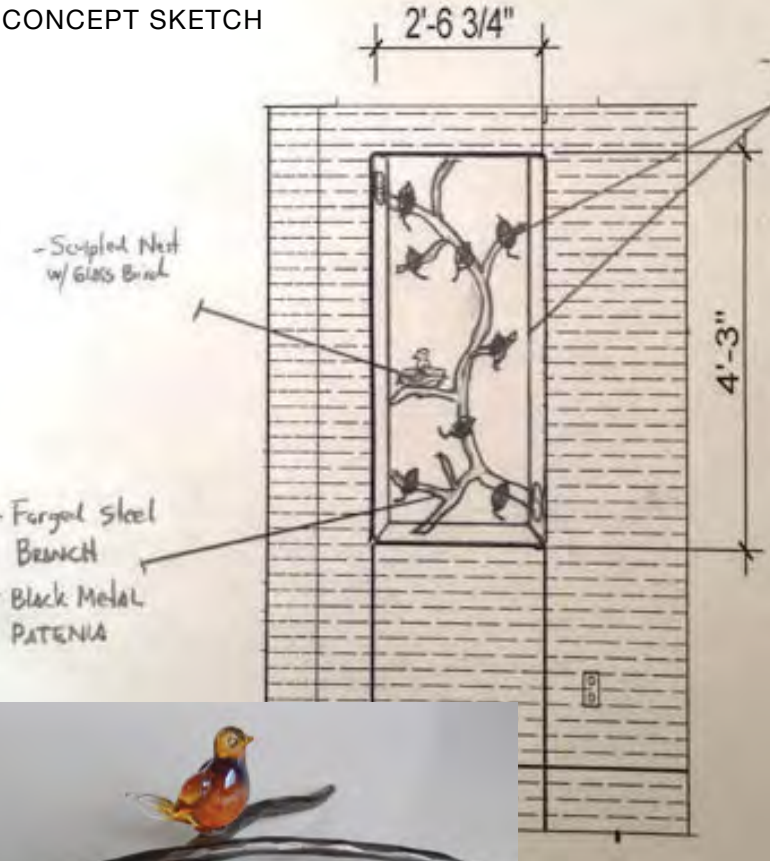
Waiting Area Feature

History, tradition, and technique are the main influences of every piece of work that Chris Nordin does. These three sources are highly integrated together with Italian glass culture. Not limiting himself to traditional materials, his work continually draws him towards alternative mixed media. Knowing that the sculptural side of his work is the true challenge to his creative processes, this opens the door to the ever challenging sport of technical blowing, allowing him to sharpen his skills to a level that satisfies his technical needs. Technical glassblowing is an endless road, which is why he loves using glass as a medium, either as sculpture or sport.

Contemporary Modern design, and that which embodies beautiful form with function, plays a big role in Michelle Plucinsky’s personal designing of glass and sculpture. Much of her work evolves around themes of nature and color pattern, and how she can make those ideas interact within our daily lives and modern culture. She strives to produce works that evoke a familiar feeling, a type of reflective thought or moment, in which people can calm their emotions and focus their energies.

Chris Nordin Michelle Plucinsky

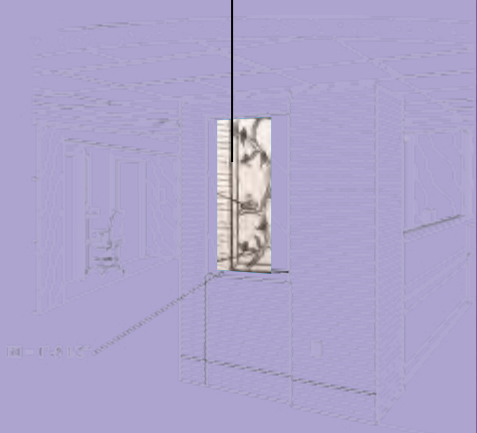
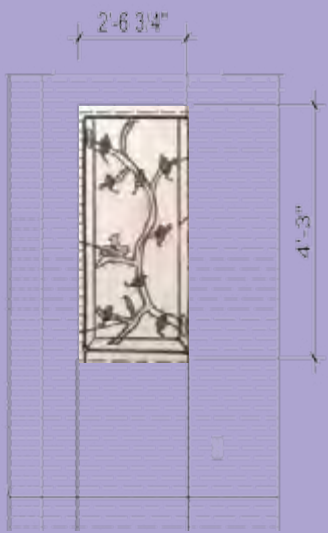
CONCEPT SKETCH



Corridor Niche:
51”H x 30”W
Multi Media Sculpture

DETAIL OF WORK IN PROGRESS

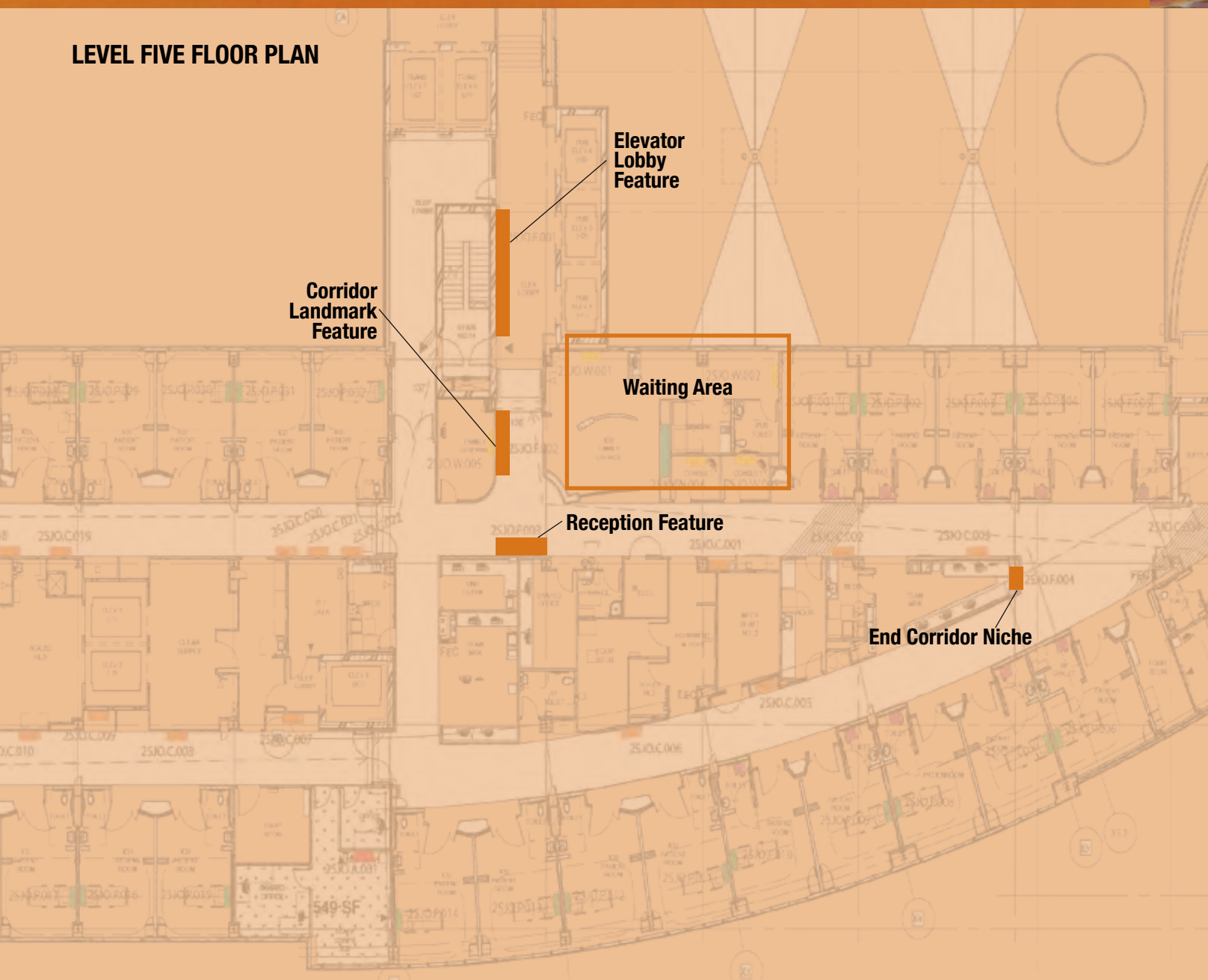
ARTIST’S PREVIOUS WORK



PERSPECTIVE

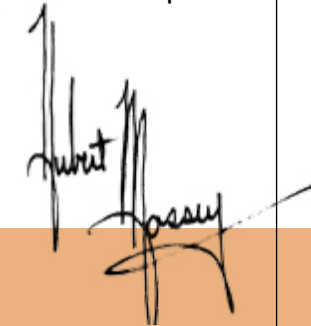
Corridor Niche

LEVEL FIVE FLOOR PLAN



5 Care

Hubert Massey graduated from Grand Valley State University in 1981 with a Bachelor of Arts degree. Prior to graduation, Mr. Massey was selected by the University to study art at the University of London—Slade Institute of Fine Art. This experience provided Hubert with vision to realize the importance of the marriage between art and architecture. Through self-study and research, Mr. Massey learned the art restoration and conservation techniques used by the “Old Masters”. He has been commissioned to participate in many art programs, workshops and gallery exhibitions throughout the metro Detroit area. In 1993, Mr. Massey’s talents were recognized by the National Society of Mural Painters of New York. Hubert is active in many community projects and, as a result of his extensive community involvement, he was appointed to the Wayne County Community Leaders Council in 1995. The range and depth of Hubert Massey’s work may be seen through commissioned work and those produced for his personal collection.



CLOSE UP DETAIL OF
ARTIST'S PREVIOUS WORK

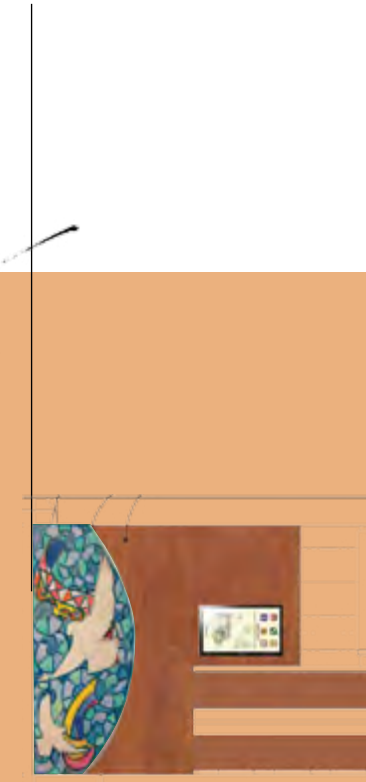


CONCEPT SKETCH

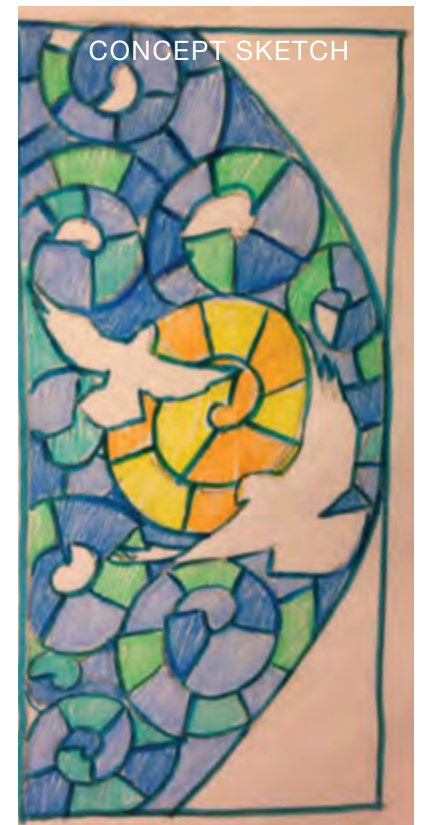
A concept sketch for a stained glass design. It features a central white dove in flight, set against a background of colorful, abstract stained glass patterns in shades of blue, green, yellow, and red. The design is framed by a thick blue border.

Reception Feature:
87"H x 29"W

Custom Mosaic



Reception Feature



Elevator Lobby Feature:
96"H x 30"W

Custom Mosaic



Elevator Lobby Feature

Monte Nagler is a Michigan Fine Art Photographer who has won numerous art awards. His images are found in many private and public collections. Galleries and agents throughout the country also

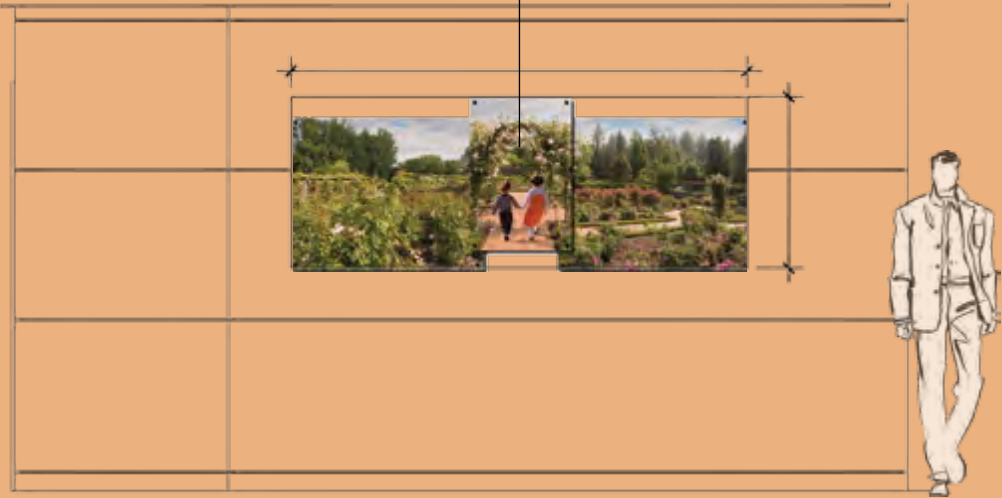
represent his photography. He is a noted writer, lecturer and teacher of photography and the author of six highly successful photography books.

Monte Nagler



"The garden scene before you depicts two children walking hand in hand through the majestic gardens. This piece was created to reflect love and family bonding and the warmth associated with those feelings."

Main Corridor Landmark Art
2'-4"H x 6'-8"W
Original Photography



Main Corridor Landmark Art

Susan Friedman was born and raised in Michigan in a rural and small town environment. Landscape is her first love, but wildlife is also a focus. Her landscapes are not carefully rendered in a realistic style, but rather interpreted and composed from memories and her own photographic records. She has studied at Michigan State University and Wayne State University for Fine Arts. She taught art to children at both St. Anne's and Hazel Park Public Schools for over 20 years.

S. N. FRIEDMAN

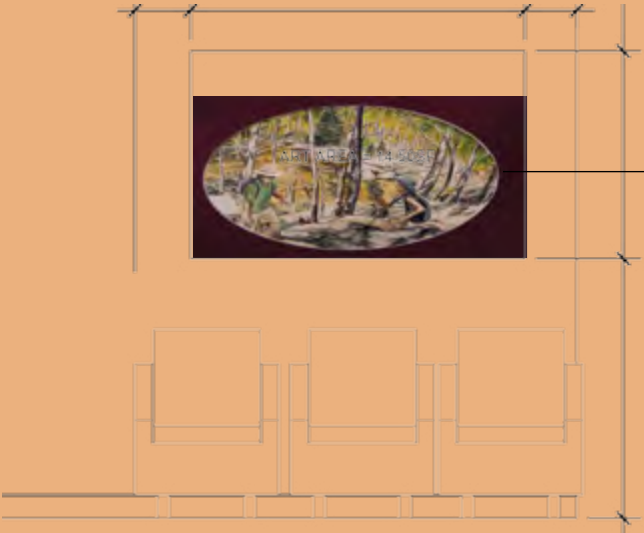
"The paintings that I am presently working on are on two oval panels of Baltic Plywood. They are painted with oils on the primed surface and the painting edges are rounded to enable the imagery to "wrap" around the perimeters. The paintings represent landscapes visited by people who are engaged in leisurely activity. The sense in both works is that the figures are engaging in their environments and finding enjoyment, peace, and renewal."



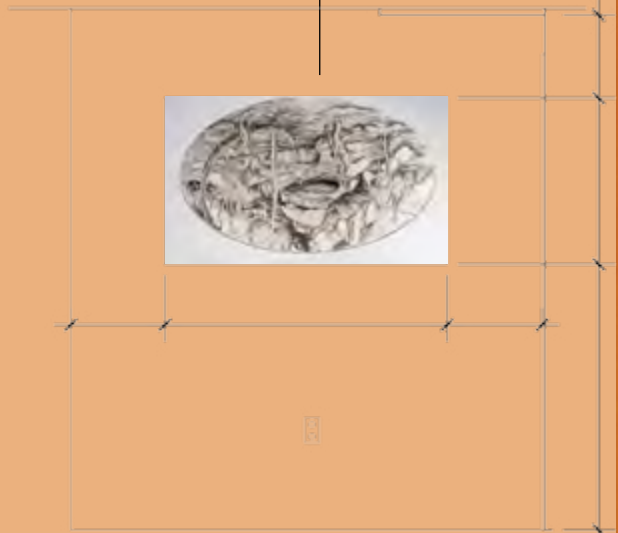
Waiting Area:
30"H x 40"W
Oil on Wood



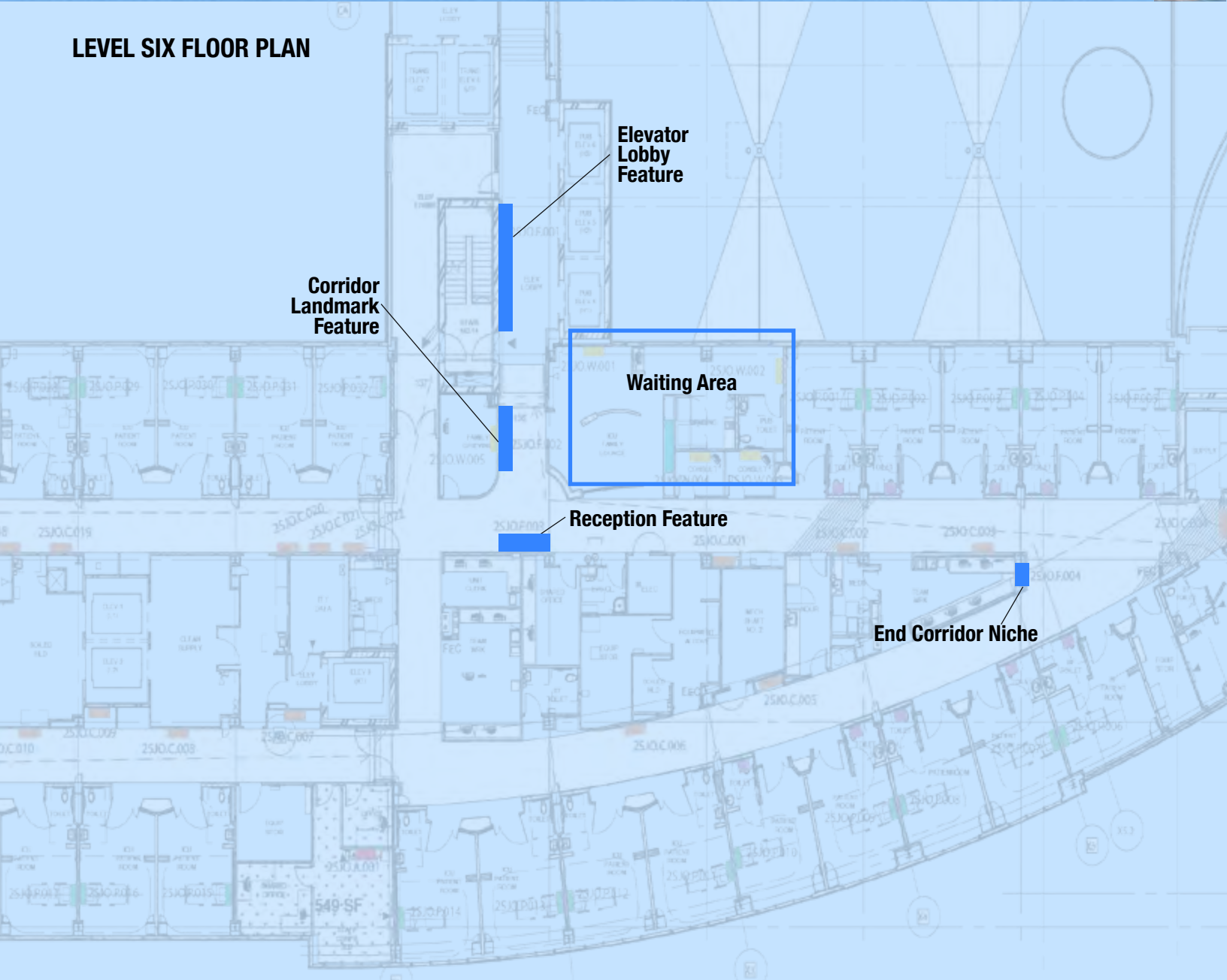
Waiting Area:
30"H x 40"W
Oil on Wood



Waiting Area Feature



LEVEL SIX FLOOR PLAN



Gretchen Kramp received a Bachelor of Fine Arts degree from the Center for Creative Studies in Detroit, Michigan in 1991. After majoring in painting, she apprenticed herself to a local ceramicist. In the mid-1990s, her tiles were represented in the ceramic collection at the Biddle Gallery in Wyandotte, Michigan, and the Dancing Eye Gallery in Northville, Michigan. In 1997, she started Gretchen Kramp Ceramic Tiles, producing single art tiles, art tile sets, murals constructed of tiles of multiple sizes and shapes, and tile tables. Kramp's murals have become popular features at Detroit Zoological Park. In 2009, she installed a large wall mural of the tree of life at the Children's Hospital of Michigan in Detroit.

Gretchen Kramp

ARTIST'S PREVIOUS WORK



CONCEPT SKETCH



CONCEPT SKETCH

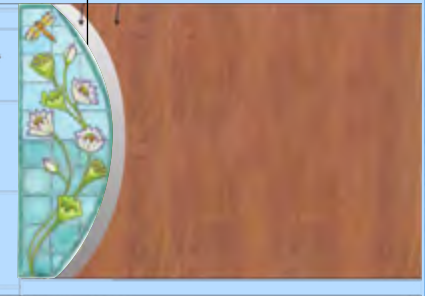


Reception Feature:
87"H x 29"W
3D Ceramic Tile



Reception Feature

Elevator Lobby Feature:
96"H x 30"W
3D Ceramic Tile



Elevator Lobby Feature

Sixth Floor: Neuroscience
6Appreciation
Imagery evoking feelings of gratitude

"At the deepest level, the creative process and the healing process arise from a single source." Rachel Naomi Remen, M.D.

Sue Holdaway-Heys-Ann Arbor, MI

Sue Holdaway-Heys is a professional quilt-art-ist residing in Ann Arbor, MI. Her work focuses on nature-based images such as floral or land-scapes. "The piece of art I will create for St. Joe's Tower is a serene composition of three white peo-ny flowers surrounded by buds/stems and leaves. Each element is comprised of many small pieces

of fabric. The flowers are approximately 2 feet in circumference with coloring of soft yellow gold/ pale greens and touches of orange, yellow and dark greens. My hope is to transport both visitor and patient to a place of beauty and emotional well-being."

Sue Holdaway-Heys



CONCEPT SKETCH

Main Corridor Landmark Art
36"H x 82"W
Quilted Fabric Art



ARTIST'S PREVIOUS WORK

Main Corridor Landmark Art

Ran Mu-Ann Arbor, MI

Ran Mu currently lives in Ann Arbor. She got her BFA in Two Demensional design from Dalian University in China and an MFA degree concentrating on studio art watercolor painting at Eastern Michigan University. Ran's works focus on the beauty of nature. She paints small objects in large scale, showing her audience the beauty that exists in the small world by exaggerating its details.

Ran Mu.

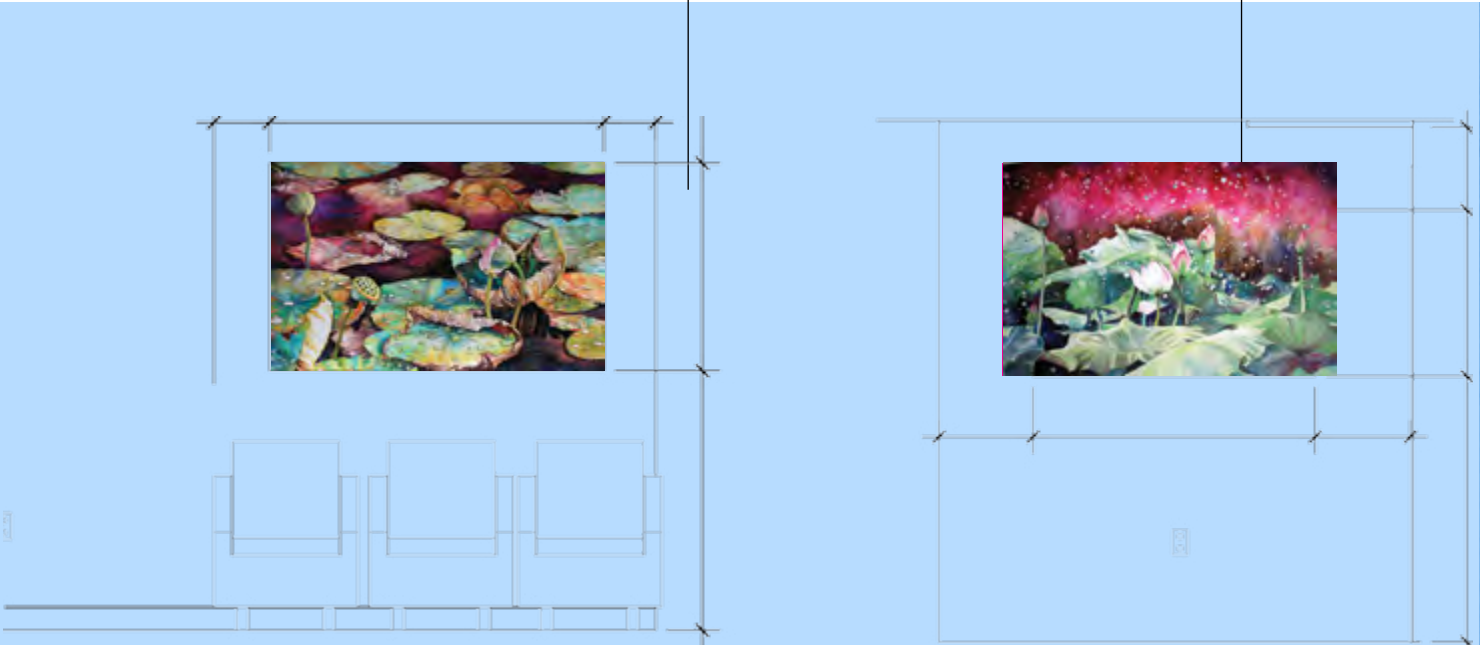


Waiting Room Feature:
28"H x 42"W

Original Watercolor



Waiting Room Feature:
28"H x 42"W
Original Watercolor



Waiting Area Features

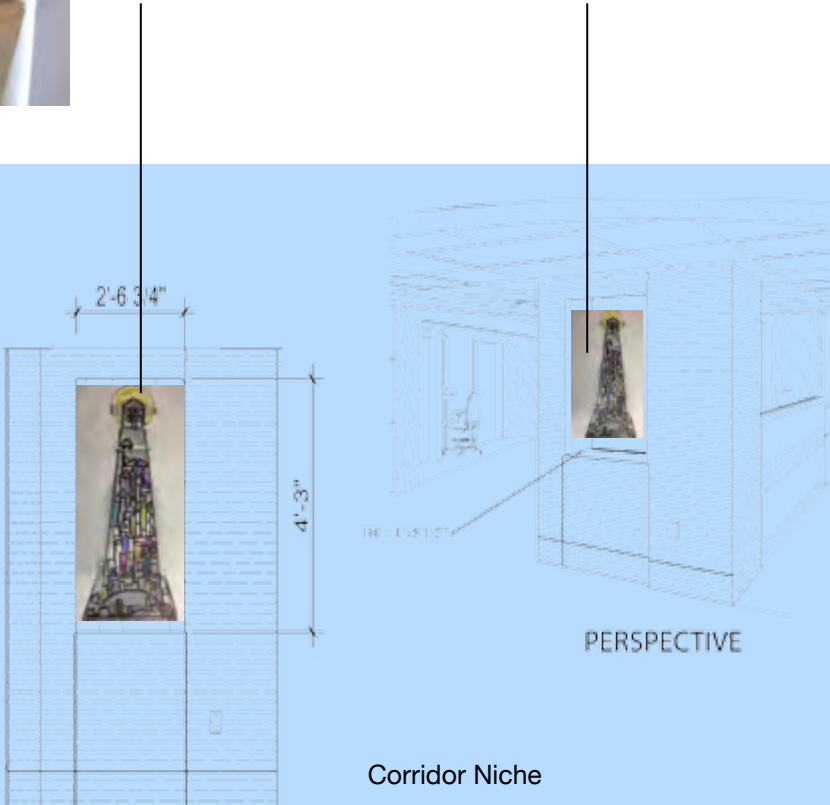
Lead artist **Jacqui Ridley** always drew, took art classes when she was an undergrad at Wayne State University, ran a successful bakery business, and found ways to nurture her creative spirit. In 2004 she sold her business and began Jacqui Ridley Mosaics.

Jacqui Ridley

DETAIL OF ARTIST'S WORK IN PROGRESS

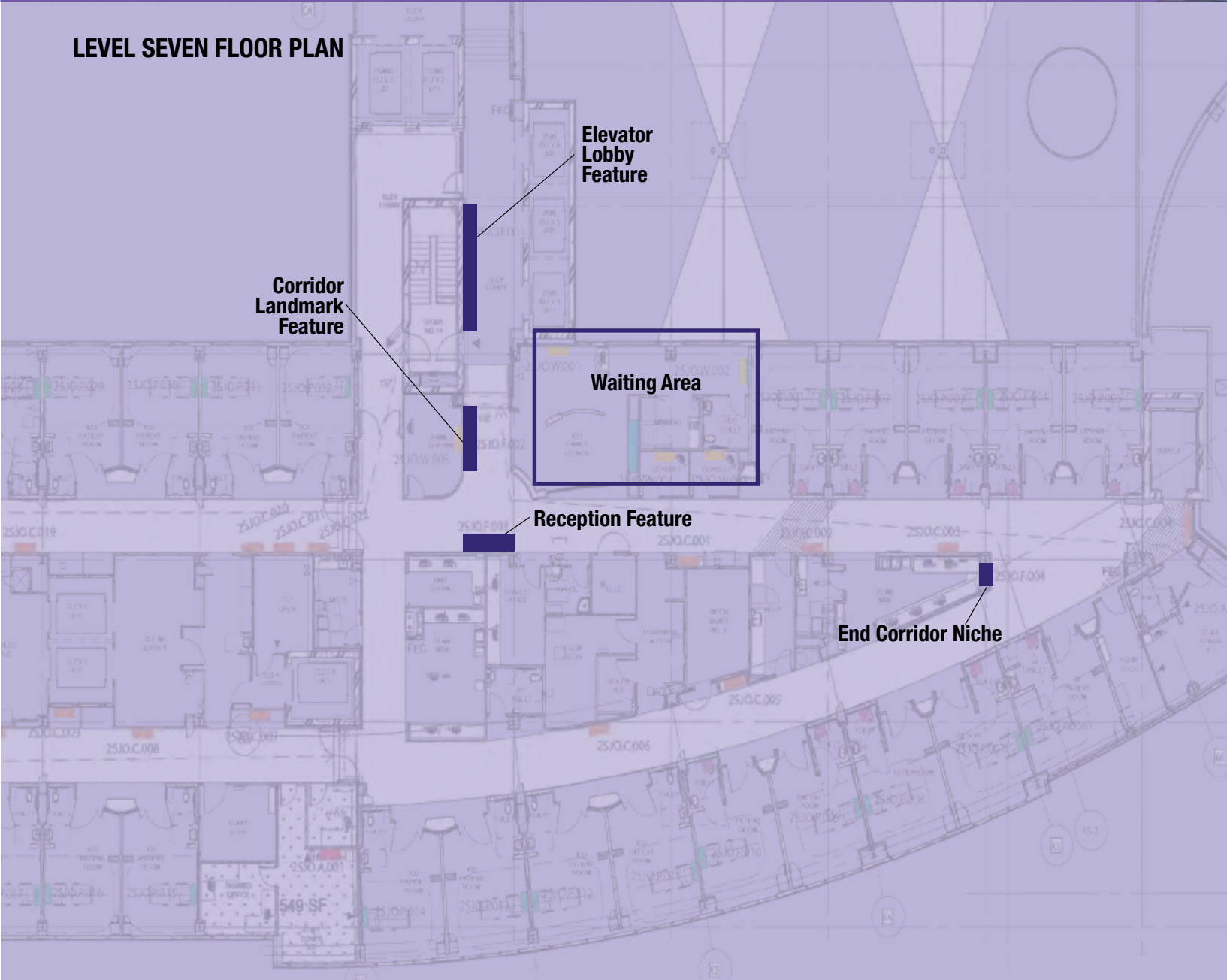


Corridor Niche
Glass, Metal and
Bead Sculpture



Corridor Niche

LEVEL SEVEN FLOOR PLAN



7 Thrive

Seventh Floor: Joint Care

Imagery supporting an active lifestyle, physical activities, boating and lighthouses

"Art condenses the experience we all have as human beings, and, by forming it, makes it significant. We all have an in-built need for harmony and the structures that create harmony. Basically, art is an affirmation of life." Trevor Bell

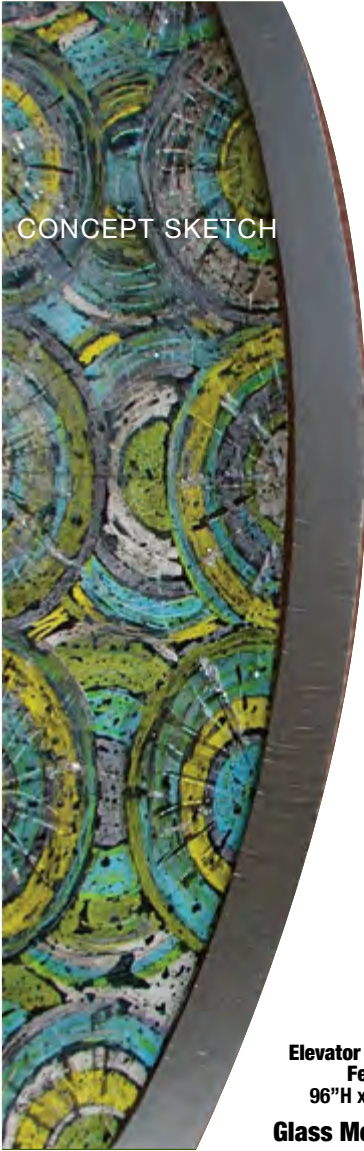
Born in Detroit, Michigan, **Karen Sepanski** attended College for Creative Studies where her focus and passion was driven toward the beauty of glass. Soon after graduation, she purchased a coach house/studio set in downtown Detroit's historic Brush Park, where she has created numerous projects for corporate, public, and private clientele, including glass murals, furniture, doors and windows, lighting, and glassware.

Karen has achieved success both locally and nationally for her outstanding application of glass; often fused with other elements such as wood, stone and metal. Karen is also a dedicated art educator, sharing her creative knowledge with the hope of perpetuating aesthetic beauty and enduring life skills amongst her students.

"I am a maker of things...and I am consciously trying to make things better, different, unique, quality. I still make art and I still teach, proving again, that those that teach do more than everyone else."



Reception Feature:
87"H x 29"W
Glass Mosaic



Elevator Lobby Feature:
96"H x 30"W
Glass Mosaic



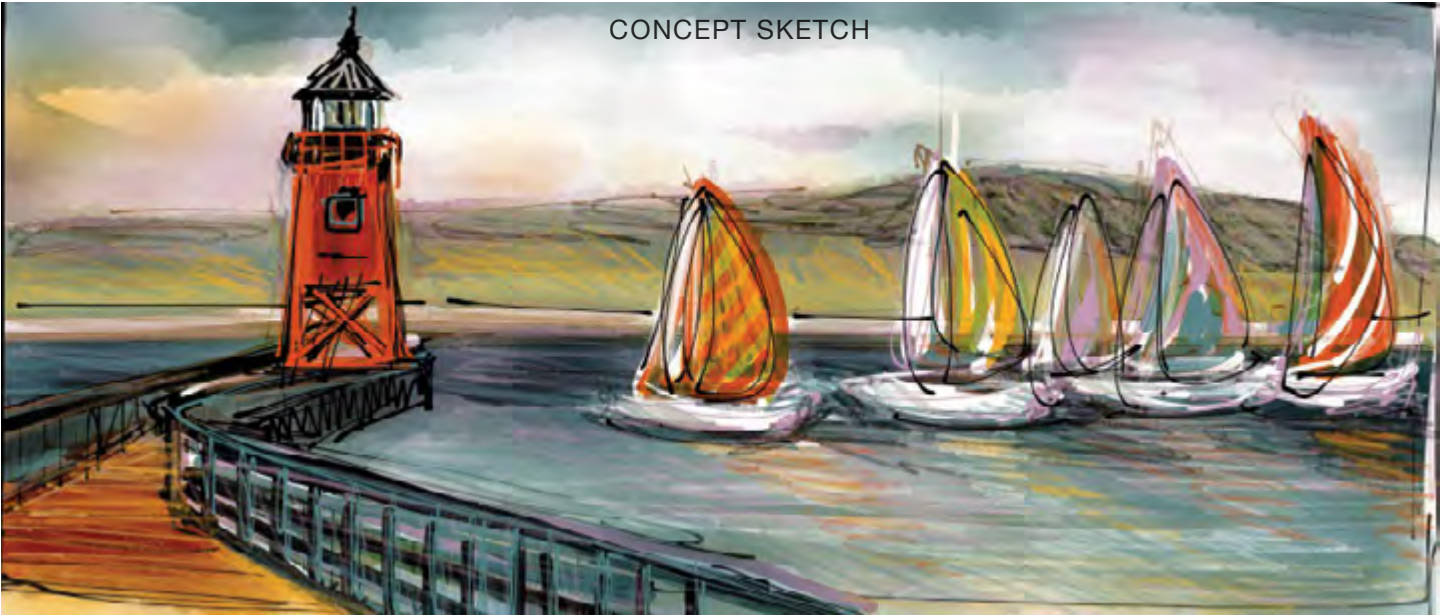
Reception Feature



Elevator Lobby Feature

Since graduating in 2002 from the College of Creative Studies in Detroit, Michigan, **Darcel Deneau** has been painting images of Detroit intended to nurture positive enthusiasm for the city's revival and has established herself as a relevant painter in metro Detroit. Her work can be found in several prominent corporate and private

collections. Deneau was commissioned for 2007 poster artwork for the Detroit International Jazz Festival, and recently completed a 29' x 7' mural for Garage Restaurant in Northville. In addition to painting, she is an active participant in the Detroit arts community, currently serving as board chair for the Detroit Artist Market.



Main Corridor Landmark Art:
36" H x 90"W
Original Oil on Board



Jacqueline Drake’s work represents a deep peace that is found within all of us. By combining her passion for color and texture and with her training in the healing arts, she is able to teach others the many healing benefits of creative expression. Her art is a visual representation of that peace. *"The two commissioned paintings that I am creating for St. Joe's represent that ever-flowing support and care during one's healing journey."* It is her deep desire that, through her work, others can come to know their own inner peace, and help ease the journey of healing.

Jacqueline Drake



Waiting Area Feature:
30" H x 40" W
Acrylic, Sculpting Medium and Mixed Media



Waiting Area Feature:
30" H x 40" W
Acrylic, Sculpting Medium and Mixed Media



Waiting Area Features

Janet Kelman maintains a studio in Ann Arbor for designing and creating architectural, sculptural and decorative glass, which is sandblasted, slumped, fused, blown, and cast. Janet began her love affair with glass in 1970. While studying chemistry in college, she watched, fascinated, as the glassblower in her department created scientific equipment. Upon graduation, she taught herself lampworking (glass worked over a torch) and, with a partner, built and ran a hot glass studio for eight years, creating her signature fish paperweights and floral perfume bottles. In 1985, Janet reinvented herself as an architectural glass artist, providing decorative sandblasted doors, windows, and mirrors. Recent commissions also include large glass mosaics, glass and metal donor walls, and lighting. Her work graces homes and businesses across the Detroit metropolitan area. Janet has a Bachelor of Science degree from the University of Michigan and a Master of Science from Wayne State University. She has also attended glass classes and workshops at Penland, Haystack, Toledo Museum of Art and the Pittsburgh Glass Center.

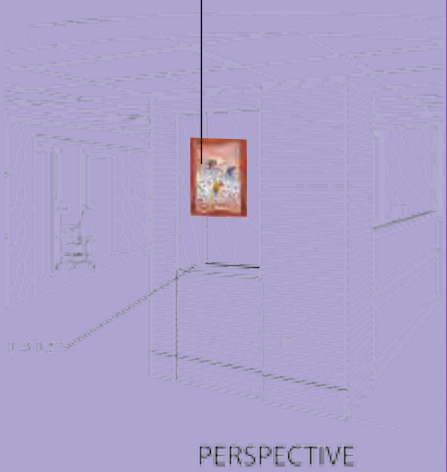
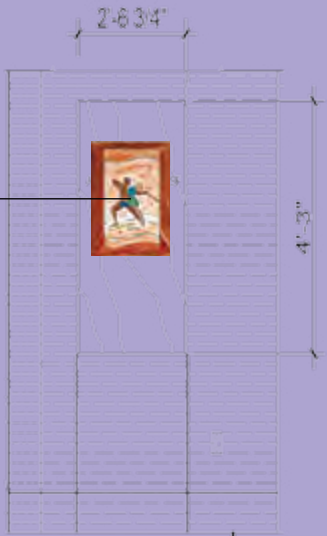
Janet Kelman



Corridor Niche Art-7th Floor
42" H x 20" W
Fused Glass Art

Corridor Niche Art-5th Floor
42" H x 20" W

Fused Glass Art



PERSPECTIVE

Corridor Niche



*For more information, please contact
the Office of Development*

248-858-3161

Featured Regional Artists:

Darcel Deneau
Jacqueline Drake
Susan Friedman
Sue Holdaway-Heys
Angelis Jackowski
Janet Kelman
Gretchen Kramp
Katherine Larson

Morrine Maltzman
Ramona Martin
Hubert Massey
Glen Michaels
Nawal Motawi
Ran Mu
Bruce Murray
Monte Nagler

Chris Nordin
Erik & Israel Nordin
Howard Nordlund
Jon Parlangeli
Michelle Plucinsky
Lucille Procter-Nawara
Sandy Rice
Jacqui Ridley

Karen Sepanski
Brian Smith
Janice Trimpe
April Wagner
Ryan Weiss
Ryan Woodward



Art Program Designed and Curated by Aesthetics, Inc.